

@orienthetics

Fashion Jewelry

@orienthetics™
2025 Spring/Summer

About us.

a designer brand

Exhibition stands apart through its commitment to exceptional craftsmanship, innovative design, and a deep-rooted sense of individuality. Each piece is meticulously created to embody a perfect blend of art and functionality, often featuring exclusive materials and intricate details that reflect the brand's vision and heritage.

Exhibition go beyond mere products—they tell a story, evoke emotion, and offer a sense of prestige and exclusivity. By owning a designer piece, customers embrace not just a product, but a lifestyle and identity that celebrates sophistication, creativity, and timeless elegance.



accessible stylish pieces

Accessible stylish pieces are thoughtfully designed items that combine fashion-forward aesthetics with affordability, making high-quality and trendy products available to a wide range of customers. These pieces prioritize style, comfort, and craftsmanship, often drawing inspiration from premium designs while remaining budget-friendly. Accessibility doesn't just mean affordability—it also implies inclusivity, meaning the brand caters to diverse styles, sizes, and preferences, ensuring that everyone can find something that resonates with their personal identity.

Customers choose Exhibition because it breaks the notion that good design and quality are reserved for luxury. Such brands empower customers to express themselves without overspending, allowing them to stay updated with trends or build their personal style without financial strain. Accessible stylish brands often focus on versatility and timeless appeal, ensuring that their pieces can seamlessly fit into anyone's wardrobe and suit various occasions.

eco-friendly philosophy

Exhibition is an environmentally friendly fashion jewelry brand that redefines luxury with sustainability at its heart. Those beautiful, common and natural stones, materials are Exhibition's primary choice. As well as the production process is guaranteed to be environmentally friendly.



IDENTITY	PRODUCT	MATERIAL	COLOR	PRODUCT SIZE (cm)	PRODUCT WEIGHT (g)
FJ #0001	sole freshwater pearl necklace	pearl shell, titanium steel	white, golden	45	2
FJ #0002	Dia.10mm pearl necklace	glass, titanium steel	white, grey	50	4.5
FJ #0003	Dia.10mm pearl necklace	glass, titanium steel	white	50	4.5
FJ #0004	vintage enamel collarbone necklace 001	titanium steel	black, golden	45	4
FJ #0005	vintage sapphire necklace	titanium steel	blue, golden	45	4.5
FJ #0006	vintage new luxury necklace	titanium steel	green, golden	52	3.5
FJ #0007	vintage pearl shell rose necklace	pearl shell, titanium steel	white, golden	47	4
FJ #0008	vintage drop-shaped pearl necklace	pearl shell, titanium steel	white, golden	50	5
FJ #0009	vintage French chic square necklace	titanium steel	black, golden	50	2.5
FJ #0010	silver moon French chic necklace	pearl shell, titanium steel	white, golden	50	3
FJ #0011	pierced golden cube necklace	titanium steel	golden	45	2.5
FJ #0012	colored sweater chain	glass, titanium steel	golden	48	2.5
FJ #0013	gem French chic necklace	zircon, titanium steel	charcoal, golden	46	4
FJ #0014	glaze geometric designer necklace	glass, titanium steel	green, yellow, golden	45	2
FJ #0015	colored gems collarbone necklace	zircon, titanium steel	multicolors	45	25
FJ #0016	bamboo x pearl shell collarbone necklace	pearl shell, titanium steel	white, golden	45	13
FJ #0017	vintage enamel layers collarbone necklace 002	titanium steel	black, golden	46	9
FJ #0018	emerald gem snake chain	zircon, titanium steel	green, golden	50	13
FJ #0019	vintage golden cross cool girl necklace	glass, titanium steel	black, golden	50	5
FJ #0020	tiger-ite Maillard Amber sweater chain	glass, titanium steel	brown, golden	50	12



@orienthetics™
www.theorientglobal.com

IDENTITY	PRODUCT	MATERIAL	COLOR	PRODUCT SIZE (cm)	PRODUCT WEIGHT (g)
FJ #0021	golden belt snake chain	titanium steel	golden	42	9
FJ #0022	golden rose&moon necklace	titanium steel	golden	50	8
FJ #0023	silver gem layers luxury necklace	crystal, zircon, metal	red, silver	50	22
FJ #0024	blue gem layers vintage necklace	stone, zircon, metal	blue, golden	45	12
FJ #0025	white pearl pendant necklace 001	pearl shell, titanium steel	white, golden	50	8
FJ #0026	colored gems serpentine necklace	zircon, titanium steel	multicolors	47	12
FJ #0027	white pearl square pendant necklace 002	pearl shell, titanium steel	white, golden	45	5.5
FJ #0028	puzzle-shaped golden collarbone necklace	titanium steel	golden	50	4
FJ #0029	drooping pearl modern chic necklace	faux pearl, titanium steel	white, golden	52	5
FJ #0030	golden round-shaped pearl layers necklace	titanium steel	golden	43	8
FJ #0031	golden round-shaped layers necklace	freshwater pearl, titanium steel	white, golden	50	5
FJ #0032	rice-shaped pearl necklace	freshwater pearl	white	45	15
FJ #0033	round-shaped silver moon necklace	pearl shell, titanium steel	white, golden	53	5
FJ #0034	vintage round-shaped golden chain	pearl shell, titanium steel	white, golden	53	7
FJ #0035	vintage Sicily gem purple golden necklace	zircon, titanium steel	plum, golden	50	7
FJ #0036	heart-shaped black&golden chain	titanium steel	black, golden	50	7
FJ #0037	the Phoenix golden chain	pearl shell, titanium steel	white, golden	45	5
FJ #0038	the Butterfly exotic fantasy chain	glass, titanium steel	multicolors	45	4
FJ #0039	spinel layers exotic stylish chain	spinel, freshwater pearl, titanium steel	multicolors	45	13
FJ #0040	PinkyXPinky gem-gem necklace	zircon, copper (metal)	pink, silver	41	16



IDENTITY	PRODUCT	MATERIAL	COLOR	PRODUCT SIZE (cm)	PRODUCT WEIGHT (g)
FJ #0041	Emerald gem-gem necklace	zircon, titanium steel	green, silver	45	16
FJ #0042	stylish cool girl pinky chain	zircon, copper (metal)	pink, silver	49	18
FJ #0043	flowers blooming pinky necklace	zircon, copper (metal)	pink, silver	45	12
FJ #0044	drooping gem Luxury Lady necklace	zircon, copper (metal)	red, silver	50	16
FJ #0045	flourishing rose x pearl necklace	freshwater pearl, titanium steel	red, white, golden	41	18
FJ #0046	small beads serpentine necklace	freshwater pearl, titanium steel	white, golden	50	9
FJ #0047	gilded lily x pearl necklace	freshwater pearl, titanium steel	white, golden	41	18
FJ #0048	multiple freshwater pearl necklace	freshwater pearl, titanium steel	white, golden		
FJ #0049	droopy gold x pearl necklace	freshwater pearl, titanium steel	white, golden	41	18
FJ #0050	square pendant x pearl necklace	freshwater pearl, pearl shell, titanium steel	white, golden	50	16
FJ #0051	gilded moon x pearl necklace	freshwater pearl, titanium steel	white, golden	50	16
FJ #0052	red&golden heart x pearl necklace	freshwater pearl, zircon, titanium steel	red, white, golden	50	18
FJ #0053	multiple gem-gem x pearl necklace	freshwater pearl, zircon, titanium steel	multicolors	50	14
FJ #0054	square emerald gem x pearl necklace	freshwater pearl, zircon, titanium steel	green, white, golden	45	12
FJ #0055	metropolitan chic red heart x pearl necklace	freshwater pearl, titanium steel	red, white, golden	50	22
FJ #0056	Luxury Lady crystal grid necklace	zircon, copper (metal)	multicolors	45	18
FJ #0057	Glass Glazing blue chain	glass, titanium steel	blue, golden	50	40
FJ #0058	long bead necklace red&white gem	tiger-ite, freshwater pearl, titanium steel	red, white, golden	65	40
FJ #0059	short bead necklace blue&white gem	tiger-ite, freshwater pearl, titanium steel	blue, white, golden	50	30
FJ #0060	mid-luxury gilded rose x pearl necklace	freshwater pearl, pearl shell, titanium steel	white, golden	50	13

FJ #0001 sole freshwater
pearl necklace

Exhibition



FJ #0002 Dia.10mm pearl
necklace

Exhibition



FJ #0003 Dia.10mm pearl
necklace

Exhibition



FJ #0004 vintage enamel
collarbone necklace 001

Exhibition





NEW

COLLECTION

100% Premium Material



FJ #0005 vintage sapphire necklace



FJ #0007 vintage pearl shell rose necklace



FJ #0006 vintage new luxury necklace



FJ #0008 vintage drop-shaped pearl necklace



FJ #0009 vintage French chic square necklace



FJ #0011 pierced golden cube necklace



FJ #0010 silver moon French chic necklace



FJ #0012 colored sweater chain



FJ #0013 gem French chic necklace



FJ #0015 colored gems collarbone necklace

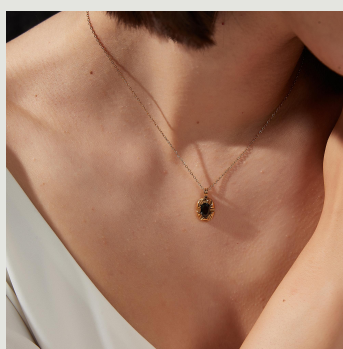
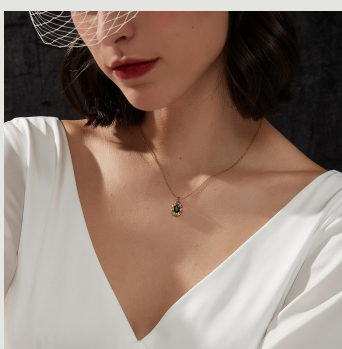
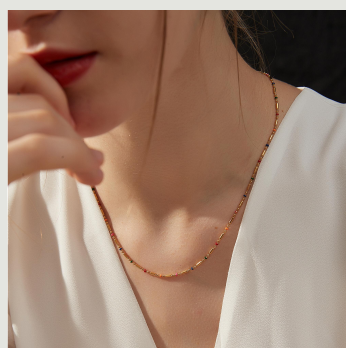
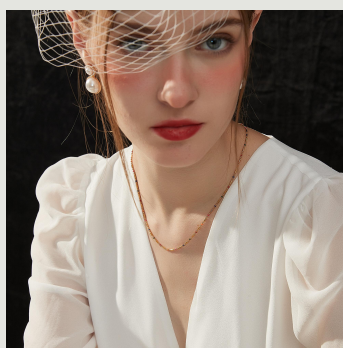
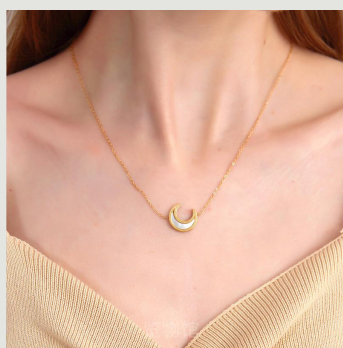
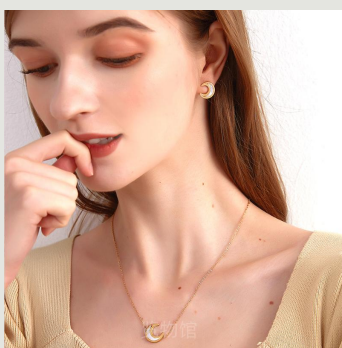
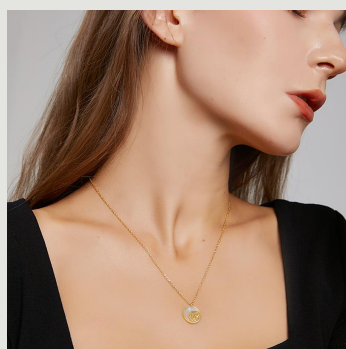
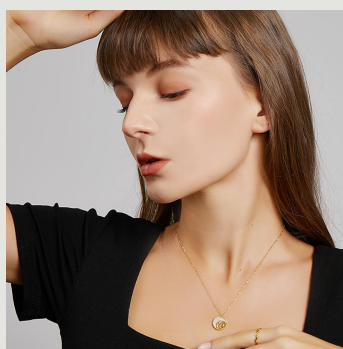
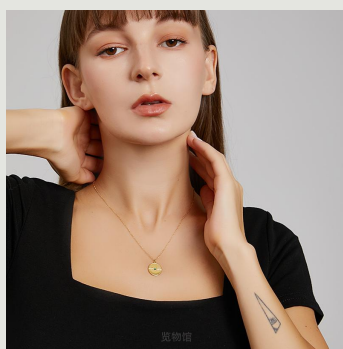
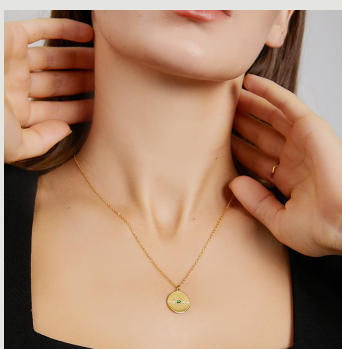


FJ #0014 glaze geometric designer necklace



FJ #0016 bamboo x pearl shell collarbone necklace





FJ #0017

vintage enamel
layers collarbone
necklace 002

Exhibition



FJ #0019

vintage golden
cross cool girl
necklace

Exhibition



FJ #0021

golden belt snake
chain

Exhibition



FJ #0023

silver gem layers
luxury necklace

Exhibition



FJ #0018

emerald gem snake
chain

Exhibition



FJ #0020

tiger-ite Maillard
Amber sweater
chain

Exhibition



FJ #0022

golden rose&moon
necklace

Exhibition

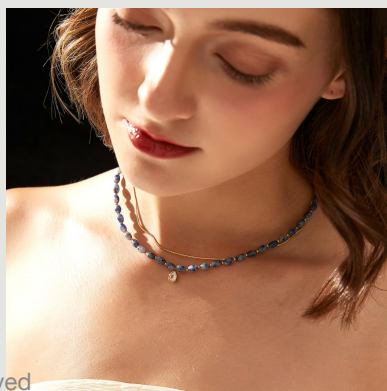
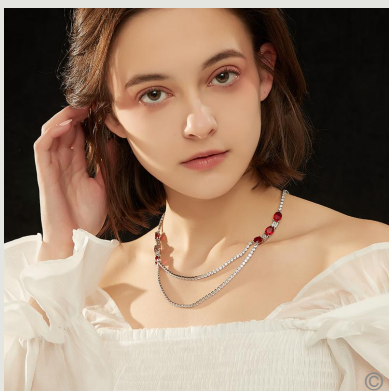
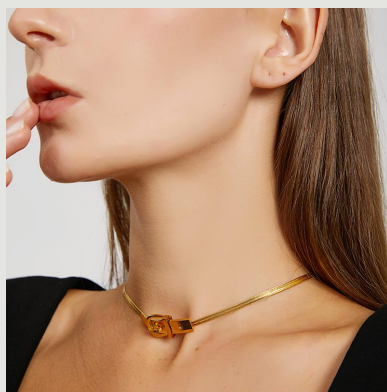
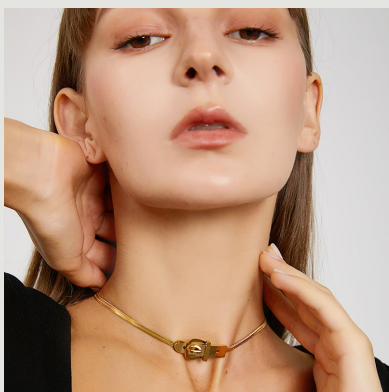
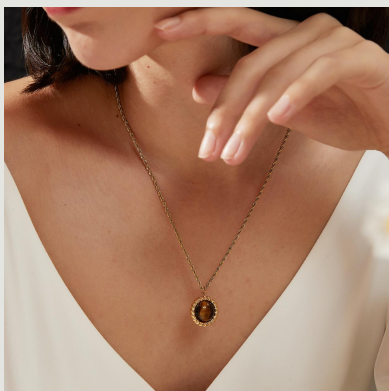
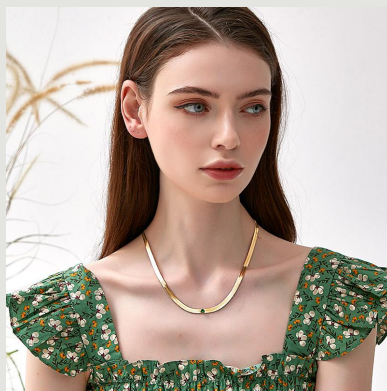
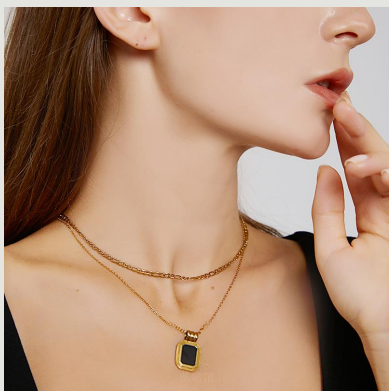


FJ #0024

blue gem layers
vintage necklace

Exhibition





FJ #0025

white pearl pendant
necklace 001



white pearl square
pendant necklace

FJ #0027

002



drooping pearl
modern chic
necklace

FJ #0029

Exhibition



golden round-
shaped layers
necklace

FJ #0031

Exhibition



FJ #0026

colored gems
serpentine necklace



puzzle-shaped
golden collarbone
necklace

FJ #0028

Exhibition



golden round-
shaped pearl layers
necklace

FJ #0030

Exhibition

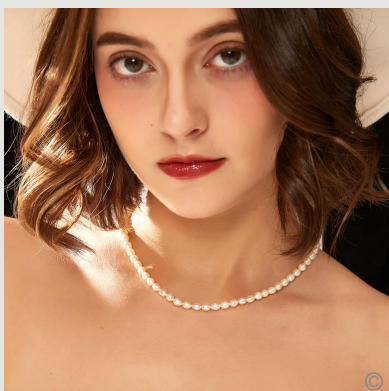
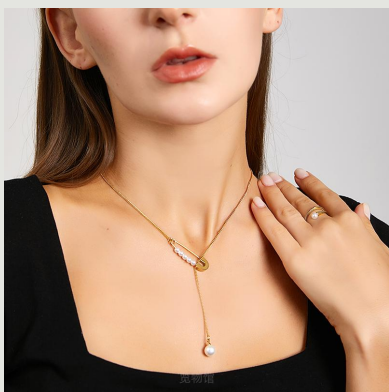
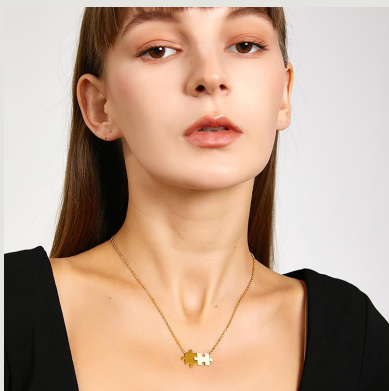
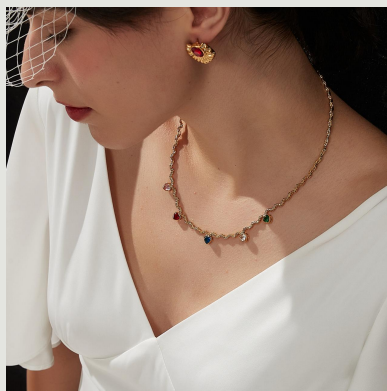


rice-shaped pearl
necklace

FJ #0032

Exhibition





FJ #0033

round-shaped silver
moon necklace



FJ #0035

vintage Sicily gem
purple golden
necklace



FJ #0037

the Phoenix golden
chain



FJ #0039

spinel layers exotic
stylish chain



FJ #0034

vintage round-
shaped golden
chain



FJ #0036

heart-shaped
black&golden chain



FJ #0038

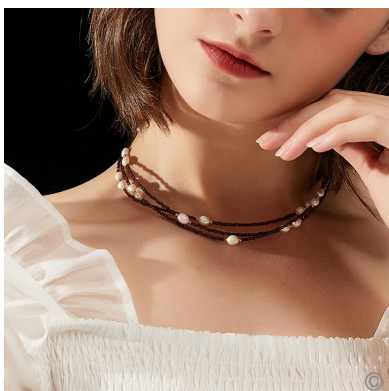
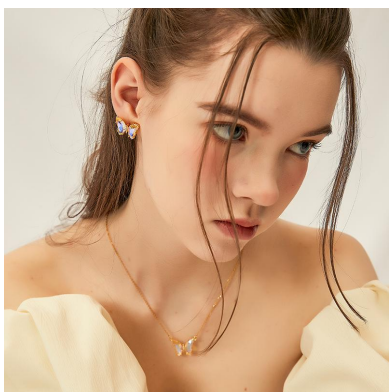
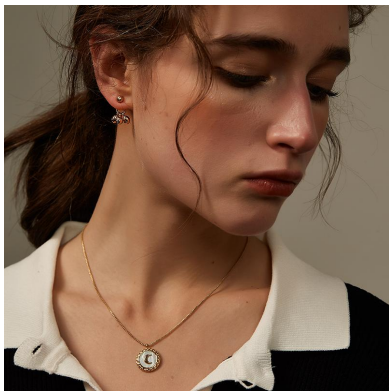
the Butterfly exotic
fantasy chain

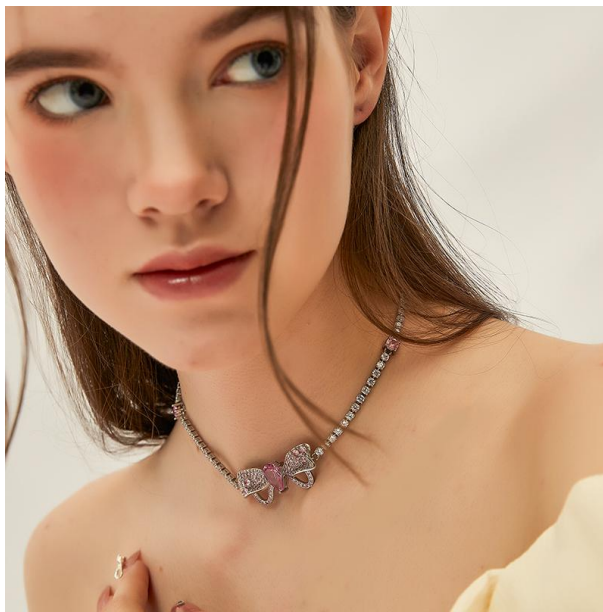


FJ #0040

PinkyXPinky gem-
gem necklace

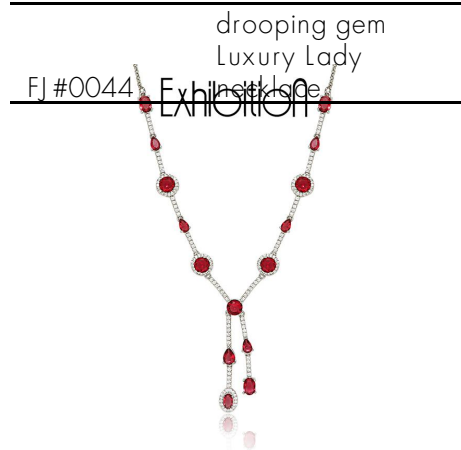


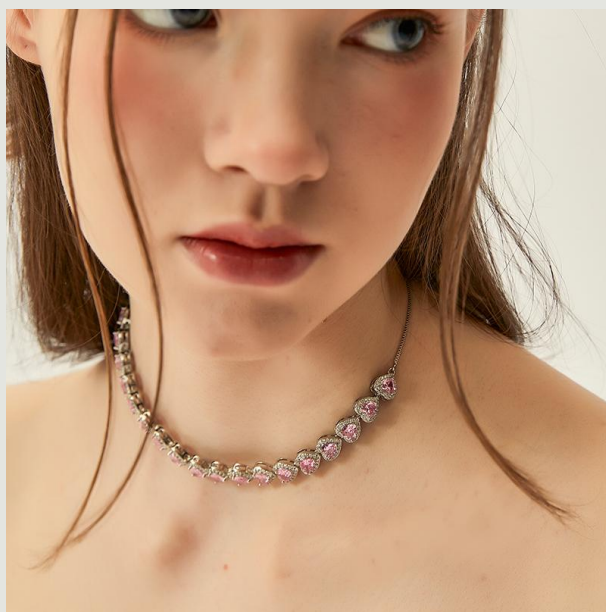




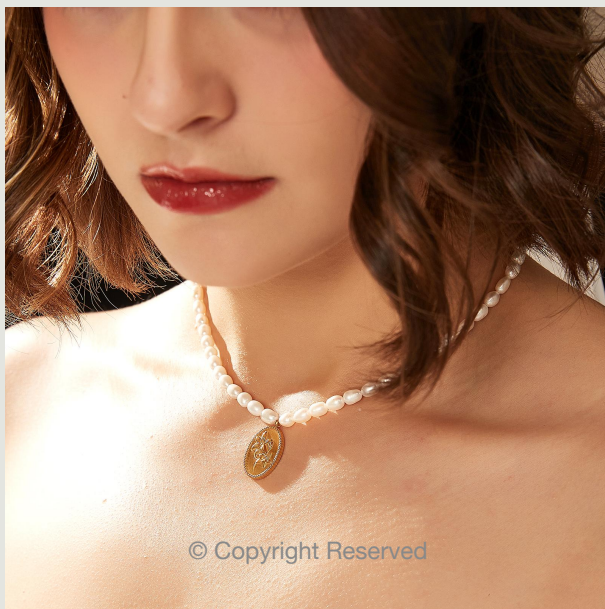
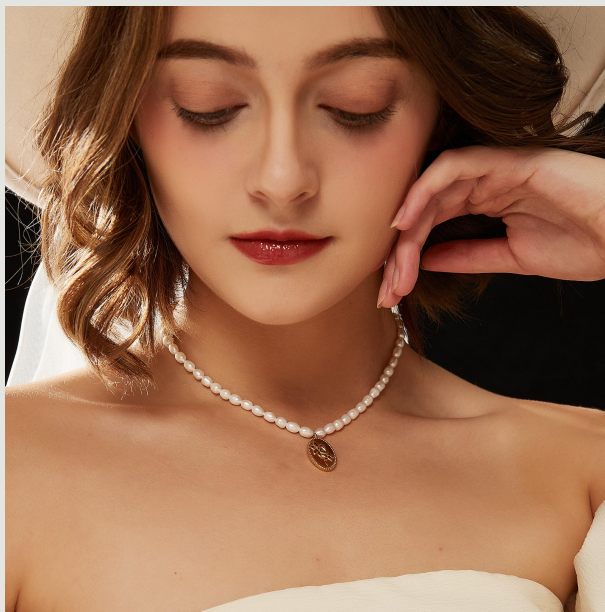
FJ #0040 PinkyXPinky gem-
gem necklace











FJ #0049

droopy gold x
pearl necklace

Exhibition



FJ #0051

gilded moon x
pearl necklace

Exhibition



FJ #0053

multiple gem-gem x
pearl necklace

Exhibition



FJ #0055

metropolitan chic
red heart x pearl
necklace

Exhibition



FJ #0050

square pendant x
pearl necklace

Exhibition



FJ #0052

red&golden heart x
pearl necklace

Exhibition



FJ #0054

square emerald
gem x pearl
necklace

Exhibition

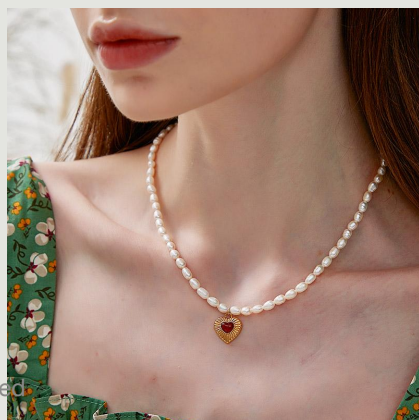
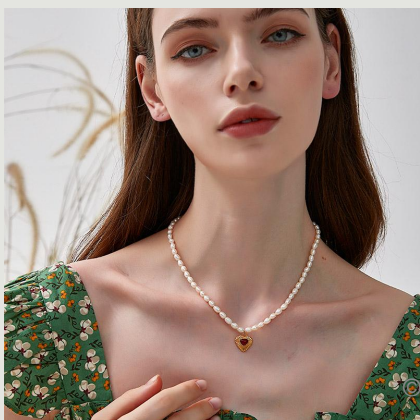
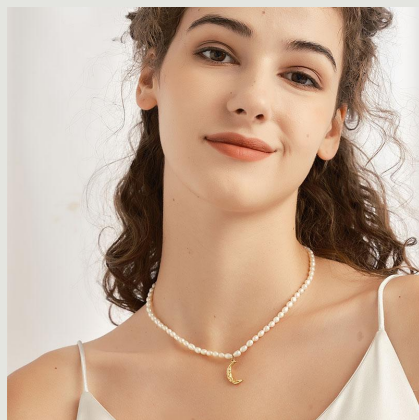
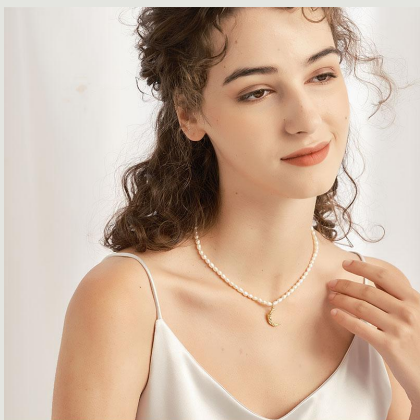
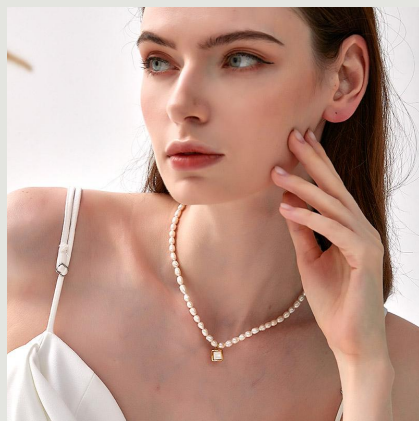
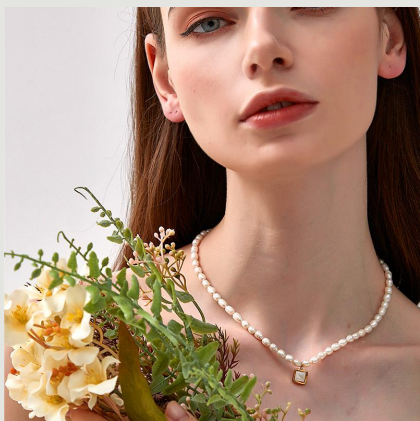


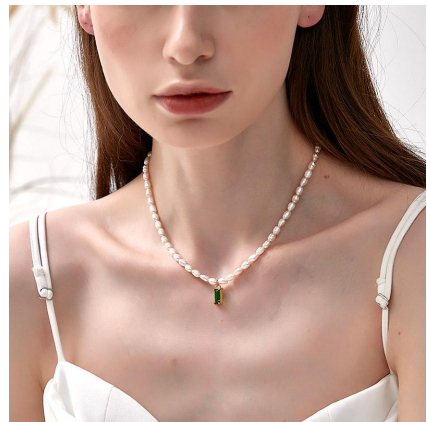
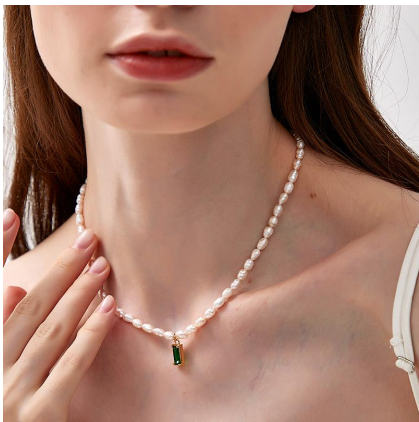
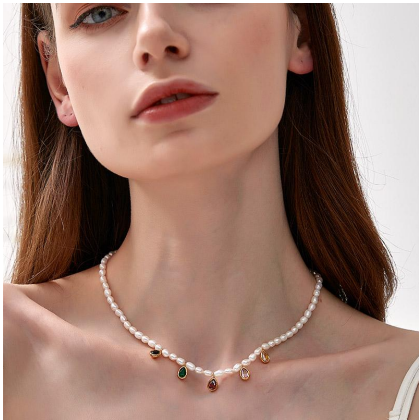
FJ #0056

Luxury Lady crystal
grid necklace

Exhibition

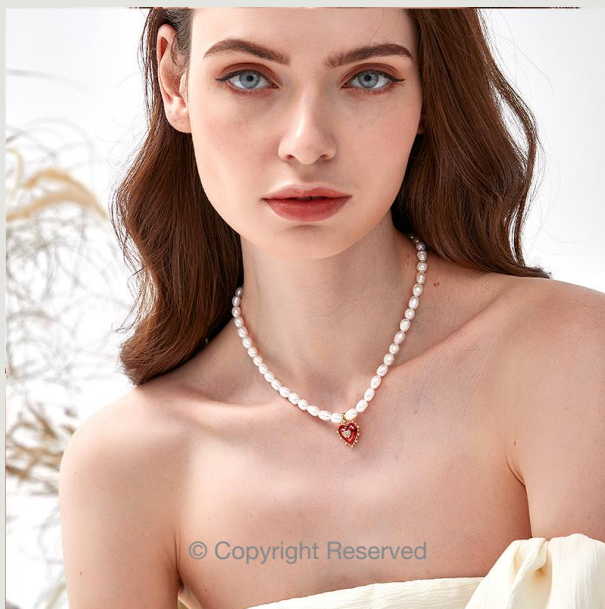
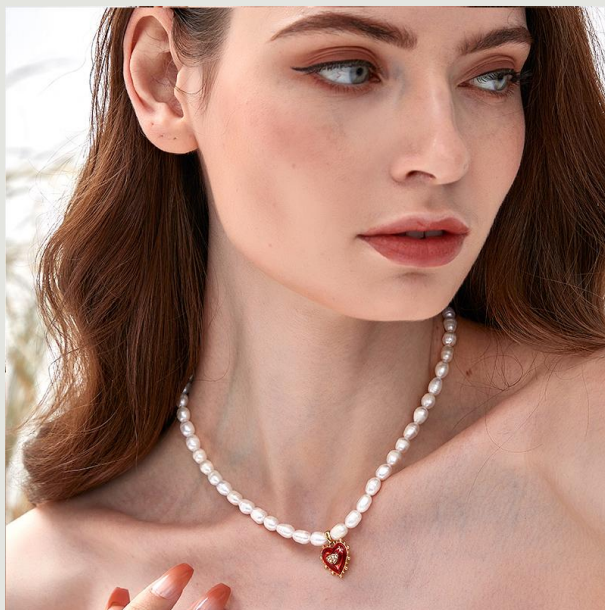






Exhibition





Exhibition





Exhibition







Exhibition



FJ#0058
long bead necklace
red&white gem





Exhibition



FJ#0059
short bead necklace
blue&white gem





Exhibition









** As part of our commitment to providing tailored solutions, we are pleased to offer customization for certain product categories. Backed by Asia's high-quality supply chain system, we have the capability to meet your specific product needs, whether it involves changes in design, materials, or other specifications.*

Customization Process: Please share your specific requirements with us. We believe that you know your needs best, and we are here to work with you to bring your vision to life. If you require any custom features, packaging, or adjustments, we will collaborate closely to meet your expectations.



reach out

Charlene Pan
Communication Director
charlenepan@theorientglobal.com
charlene.pan@theorientglobal.com

*Please no hesitation to contact us for product details, wholesale quotation and wholesale policy.

discover more

Website
www.theorientglobal.com

@orienthetics

Thank you.